



Bramhope Primary School Expansion

Overview of Planning Application Proposals

Introduction



- A planning application will soon be submitted for proposed construction works at Bramhope Primary School.
- The proposed development seeks to address a number of challenges at the site and to improve the current facilities to cater for the existing and future needs of the school.
- It is proposed to expand from 280 pupil capacity to 420 pupil capacity. However, the school has taken in an extra 20 pupils for the last 2 years already and the existing attendance is 325 pupils - the rise to 420 pupils would therefore add 95 pupils over a period of 5 years (20 pupils per year).

Key Challenges



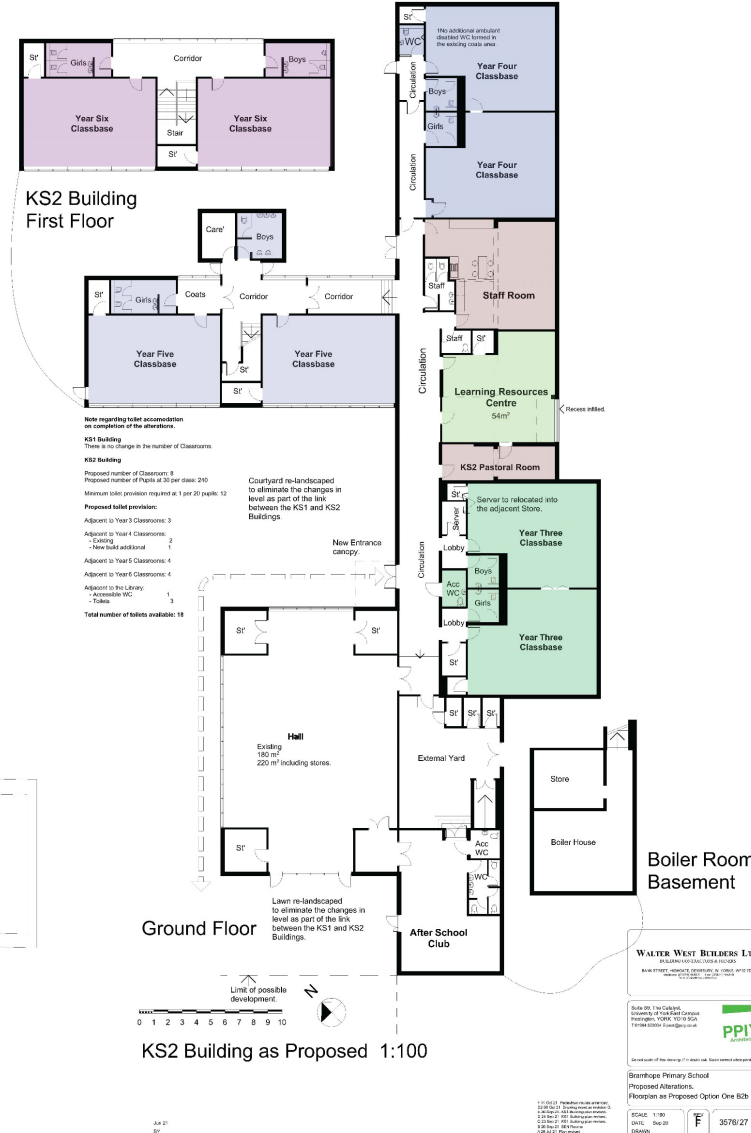
- There is currently a lack of consistent boundary fencing to the perimeter of the site which poses a safeguarding and security risk for the school.
- The split site has resulted in an undesirable cultural split for both staff and pupils, and further exacerbates safeguarding and security issues across the site made more pressing due to a public footpath which dissects the school site.
- The split site also causes some operational difficulty for the school, particularly around meal times. The current dining arrangement allows for two sittings within the small hall (adjacent to kitchen), which is necessary to accommodate the full cohort within the existing hall space.
- Parking provision is also a problem for the school, with restricted access to parking across the site. This is exacerbated due to the close proximity to the busy medical centre car park at the front entrance to the school. Designated spaces are currently leased by the school to an 'After School Club' and a private Nursery.

Proposed Development



- Internal reconfiguration of existing spaces to accommodate school expansion including reorientation of school to include main school entrance off Breary Rise (currently off Tredgold Crescent).
- New build extensions in two locations in KS1 building (small dining hall extension and small extension to general office/staff areas).
- Updated kitchen equipment.
- New landscape strategy across the site, including:
 - A landscaped link between the two buildings
 - The reorganisation and expansion of car parking
 - Perimeter fencing to the full boundary of the school campus
 - New planting

Proposed Floor Plans



KS1 Proposals:

- Relocation of main entrance.
- Small dining hall extension and small extension to general office/staff areas.
- New canopy & secure lobby doors.
- Sliding folding doors to dining hall.
- Canopy to provide solar shading to the glazed south elevation and storage for coats.

KS2 Proposals:

- Creation of 2 additional classrooms.
- Creation of new Learning Resource Centre (LRC) and staff room in place of existing main entrance.

WALTER WEST BUILDERS LTD.

BRAMHOPE PRIMARY SCHOOL

PROPOSED ALTERATIONS TO EXISTING BUILDING

Scale 1:100

Drawn by: P. J. W. 10/10/2014

Checked by: P. J. W. 10/10/2014

Approved by: P. J. W. 10/10/2014

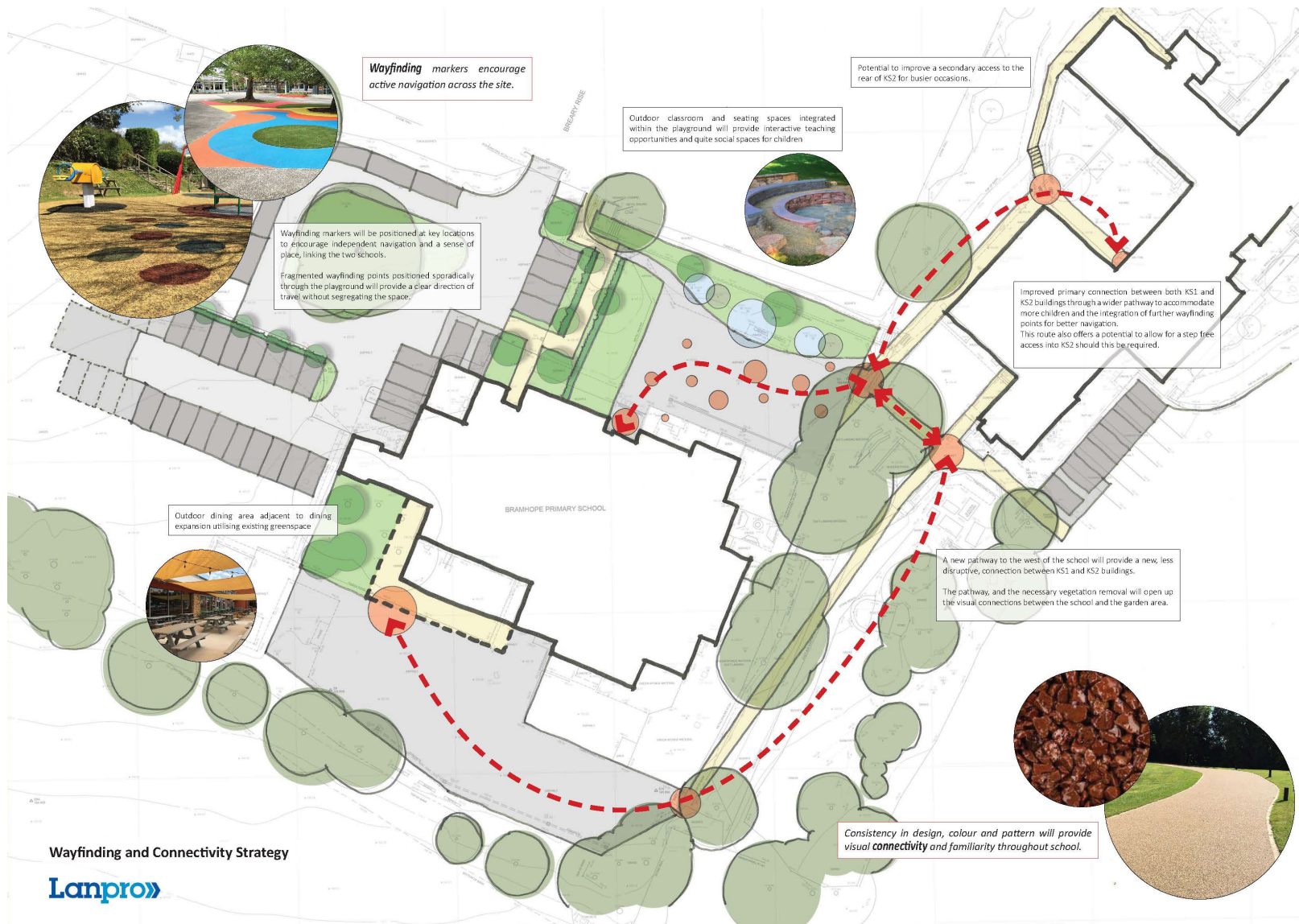
Scale 1:100

Scale 1:100

Scale 1:100

Scale 1:100

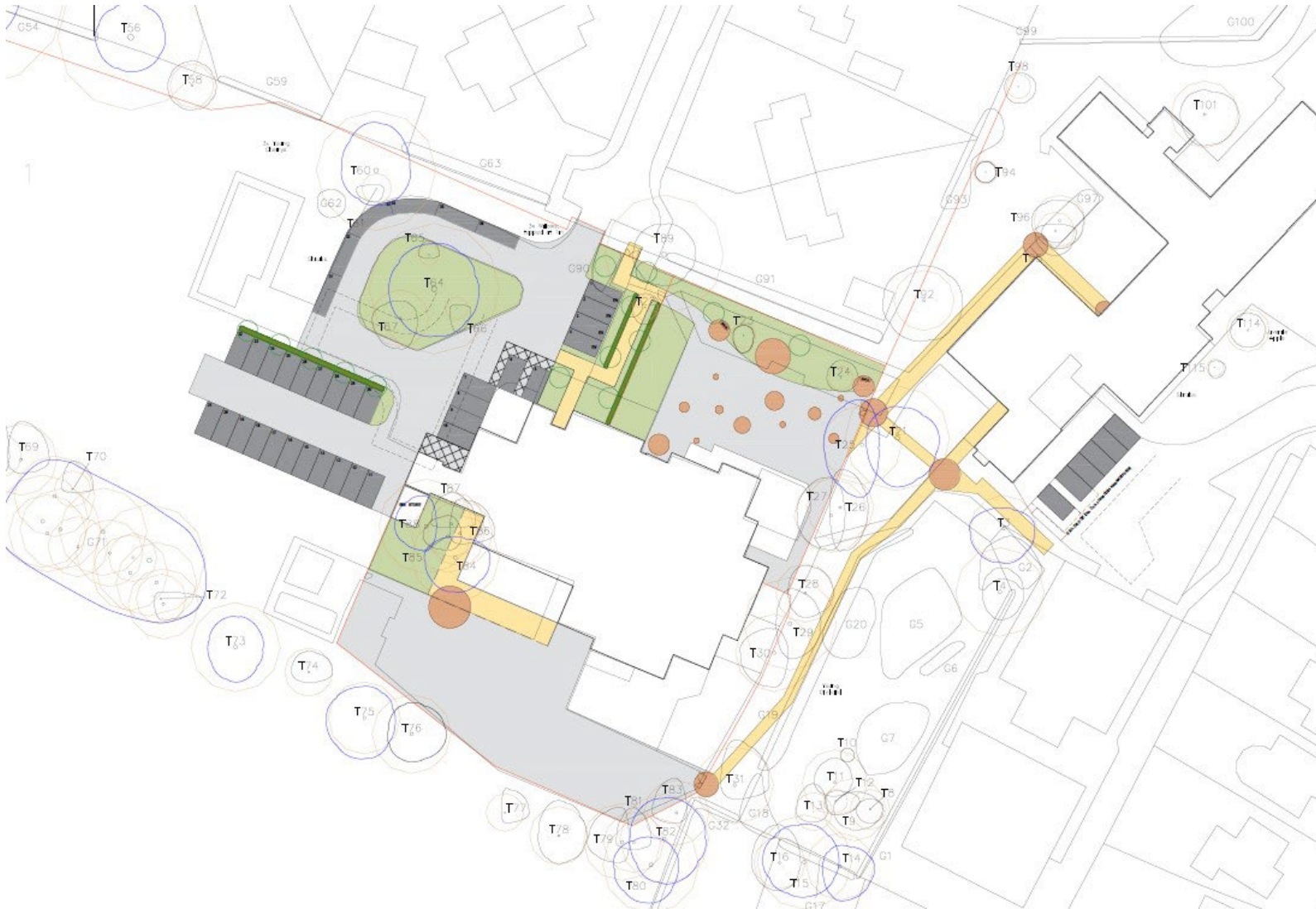
External Layout & Landscaping



Wayfinding and Connectivity Strategy



Highways & Parking



- Main entrance has been moved to Breary Rise.
- The reconfigured main car park off Breary Rise will include 35 no. car parking spaces including electric charging points.
- Tredgold Crescent car park will include 6 no. spaces including 2 no. convertible accessible bays and will be used as drop off for the nursery.

Construction Arrangements



WALTER WEST BUILDERS LTD.
ARCHITECTS, CONTRACTORS & JOINERS
BANK STREET, HARRINGTON, LEEDS LS20 7YH
Telephone: 0113 265 1111 Fax: 0113 265 1112
www.walterwestbuilders.co.uk

Site S9: The Catalyst
University of York East Campus
Heslington, YORK YO10 5DA
T: 01904 823034 E: east@york.ac.uk

Do not scale off this drawing. If it should scale, scale correct when printed at A1

Bramhope Primary School
Proposed Alterations
Contractors Site Compound

SCALE: 1:200
DATE: Oct 21
DRAWN: SY

REV
3576/01
U:\Bramhope\Design\A1\Bramhope_Site_Compound.dwg

Contact Us



Email the Design Team at:

bramhopeprimary.uk@avisonyoung.com

We will be submitting a planning application towards the end of November 2021. Once the application has been submitted, it will be available to view and comment on online via Leeds City Council's Planning Portal –

<https://publicaccess.leeds.gov.uk/online-applications/>