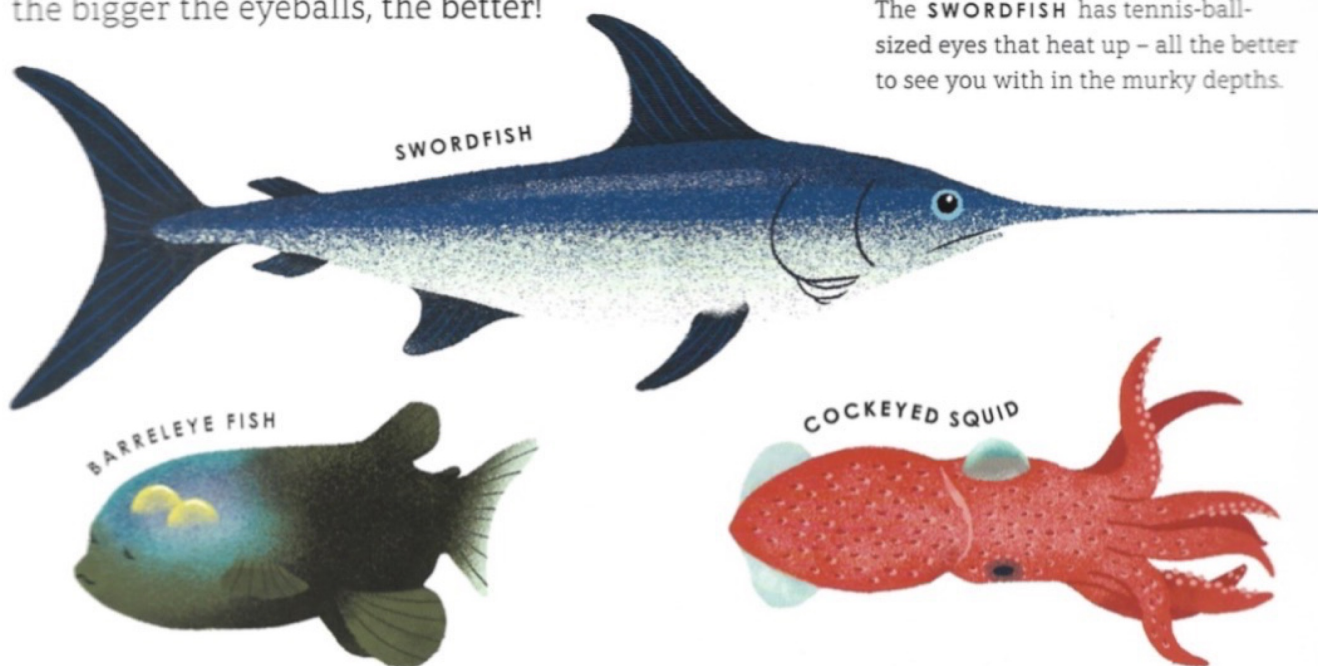


INHABITANTS OF THE DEEP

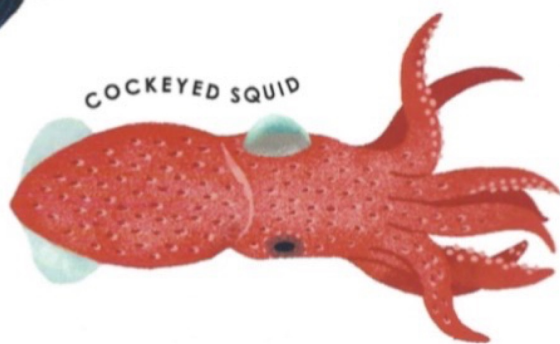
MY, WHAT BIG EYES YOU HAVE!

Light comes from above, in the dim waters of the Twilight Zone. For many creatures here, the bigger the eyeballs, the better!



The **SWORDFISH** has tennis-ball-sized eyes that heat up – all the better to see you with in the murky depths.

The **BARRELEYE FISH** got its name because its tube-like eyes turn inside its see-through head. Perfect for peering up at potential prey, such as a delicious jellyfish lunch.

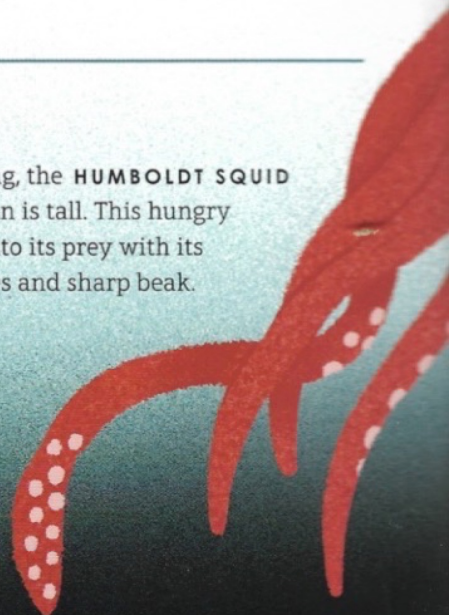
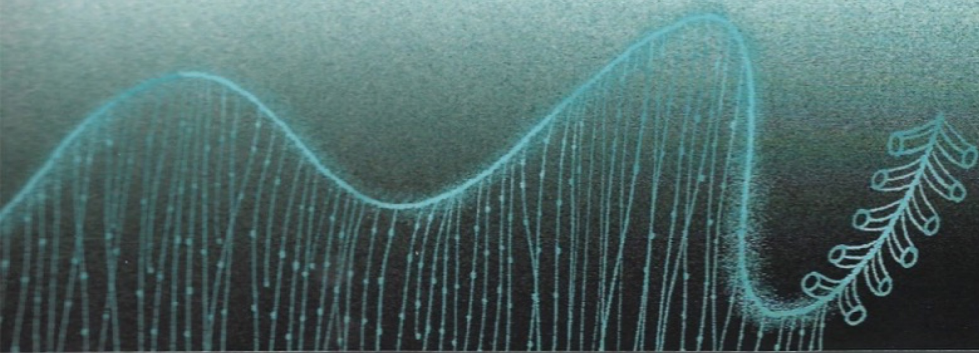


The curious **COCKEYED SQUID'S** left eye is twice the size of its right eye. The left eye looks up and the right eye looks down.

WHAT BIG TENTACLES YOU HAVE!

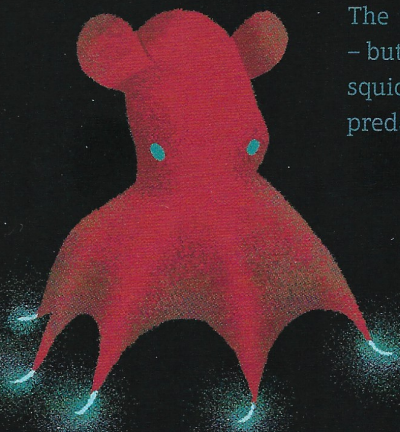
Jelly-like **SIPHONOPHORES** (*sigh-fon-oh-fours*) are giant trailing death nets. They have stinging tentacles that capture small crustaceans, and they're the longest living thing on the planet. The siphonophore can grow to a whopping forty metres long – that's longer than a blue whale.

At two metres long, the **HUMBOLDT SQUID** is as long as a man is tall. This hungry hunter latches onto its prey with its powerful tentacles and sharp beak.



WHAT BRIGHT LIGHTS YOU HAVE!

Just as fireflies glow on land, many deep-sea creatures use bioluminescence to light up the dim waters of The Deep. Chemical reactions allow these creatures to create lights to scare away predators, lure in a mate – or attract their lunch!

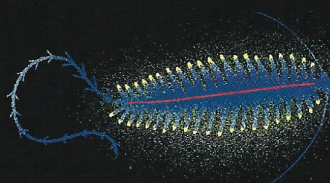


The **VAMPIRE SQUID** is not a vampire, and it's not even a squid – but it does appear to wear a dracula-like cape. The vampire squid lets off light at the tip of its eight arms, and confuses predators with a blast of twinkling bioluminescence.

The **ATOLLA JELLYFISH** has a built-in burglar alarm. When under attack, it sets off flashing lights that can be seen up to 90 metres away. If it's lucky, a much bigger predator will see those lights... and scare away its attacker.



TOMOPTERIS WORMS have a secret weapon. When under attack, they shoot off yellow sparks and make their getaway.



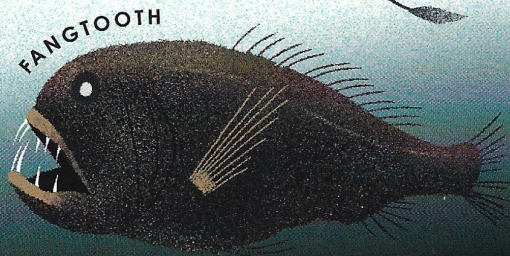
AND WHAT BIG TEETH YOU HAVE!

The **STOPLIGHT LOOSEJAW DRAGONFISH** is tricky to outmanoeuvre. Even if deep-sea shrimp hit it with a bioluminescent smokescreen, it simply turns on its red searchlight to scan the area, and attacks with its needle-like teeth.



STOPLIGHT LOOSEJAW DRAGONFISH

The **FANGTOOTH** has frightfully big fangs. They're so long, they have to tuck up into pockets in the roof of its mouth, so it doesn't pierce its brain when its jaws close!



FANGTOOTH

BUT WHAT CUTE FINS YOU HAVE!

FLAPJACK OCTOPUS

Meet **FLAPJACK**, not of the biscuit variety, but the octopus kind. This adorable octopus has stubby tentacles, big wide eyes and earlike fins that it flaps like wings.

