

## Getting the most from your **Our Place in Space Live (AR)** Session

### Platform Used = Zoom

Zoom is a super easy platform to use, even if you have no previous experience of using it. Just remember:

- You are using a pre-recorded workshop session. (link here: <https://youtu.be/wqmjZcr9Kio>) so you are able to join at any time.
- Remember to pause the recording each time an activity starts to allow time for your children to complete it.

### Stuff you need:

- 500cms of string
- Planet Templates (provided)
- Ruler/Measuring Tape
- Scissors
- Glue Stick
- Small Bowl of cold water
- Ground Pepper
- Sticky tape

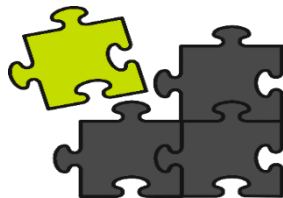


### How does it fit with the National Curriculum?

Suitable for both KS1/KS2

Links to Science/Physics/Art/Maths/Earth Science

Session can also be extended to look at the size of planets in relation to one another

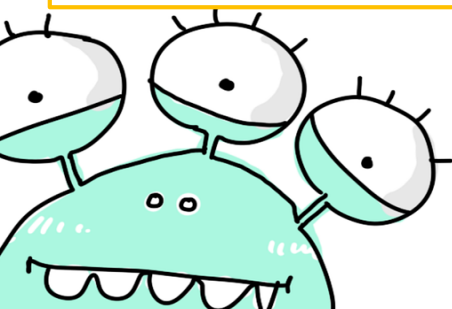


### Featuring AR

This session features the all new Augmented Reality Application developed especially for Space Detectives. Completely free to download, it will bring the Solar System alive in your home!

<https://play.google.com/store/apps/details?id=com.SpaceDetectives.OurPlaceInSpace&hl=en>

ENJOY!



**YORKSHIRE DALES**  
National Park Authority

